

QUINCY DRAINAGE

Memorandum

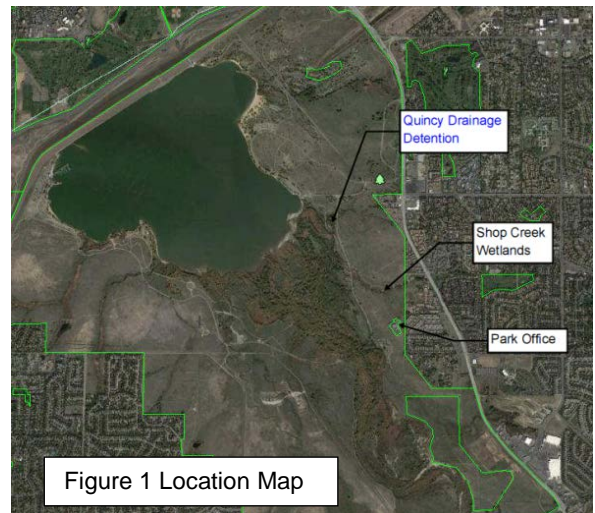
William P. Ruzzo, PE, LLC
6641 West Hamilton Drive,
Lakewood, Colorado 80227
(303) 589-5358
bill.ruzzo@comcast.net

To: Chuck Reid, Manager, CCBWQA
CC: Rick Goncalves, Chairman, TAC
From: William P. Ruzzo, P.E.
Date: January 14, 2014
Re: Quincy Drain – Project Summary Report

Presented in this memorandum is a summary of the Quincy Drainage Detention project.

BACKGROUND AND PURPOSE

The Quincy Drainage Detention (Project) is located in the east part of Cherry Creek State Park (see Figure 1) and consists of a small earth embankment that doubles as a paved park trail (Photo 1) with a pipe outlet and trash rack (Photo 2). The Project, which drains approximately 527 acres¹, was constructed in 1995 at a capital cost of \$219,000. To create the detention area, the park trail was relocated to the west around the Cottonwood grove and elevated to create an embankment².



PROJECT PARTNERS AND FUNDING



Quincy Drainage Detention was funded in total by the Authority and was a cooperative effort with Cherry Creek State Park.

WATER QUALITY BENEFITS

Quincy Drainage Detention temporarily detains stormwater which allows for particulate matter (i.e.: pollutants) to settle out in the storage area, which is also a Cottonwood grove. In addition, because the native soils in the detention area are relatively pervious, the Project rarely experiences a discharge through the outlet because the storm runoff infiltrates into the alluvium, providing even greater water quality benefits.



¹ Boyle Engineering Corporation June 1985. *Outfall System Planning Quincy Drainage & Shop Creek.*

² Personal communication with Jim Wulliman of Muller Engineering Co., formerly PM for Project with CH2MHill.